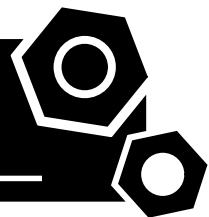


Generator set

Open type

GMS42C

SPECIFICATIONS



1 Standards & Conditions

Design Standards

The designs and the productions are in conformity with:

- Conformance European (CE)
- China Compulsory Certification (CCC)
- ISO8528-5:2005
- GB/T2820.5-2009

Environmental Operating Conditions

- Installation place: Indoors (well ventilated).
- Ambient temperature: -25°C to 45°C. The coolant heater is needed when the temperature is below 5°C
- Humidity: Less than 80%.
- Altitude: Below one thousand (1000) meters above sea level.

Factory Inspection

- Inspection items.
- Protection devices working test.
- Starting ability in normal temperature.
- 50% rated power load moment capability.
- Voltage deviation and speed variation: 0%, 25%, 50%, 75%, 100%, 110% Load.

Painting Process

- Painting process specifications and colors are based on the manufacturer's standard.
- The customer could also choose the color which the manufacturer offers.

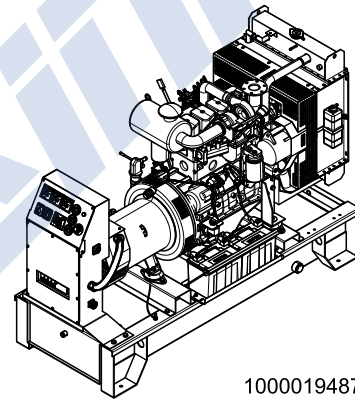
2 General Features

- Cummins engine 4BT3.9G1
- Close coupled to a Stamford alternator PI144K
- Microprocessor control module PLC-702
- NADER main circuit breaker: 80A
- Rotate speed governor: Mechanical governor
- Excitation system: Self excited SHUNT
- A.V.R model: AS480
- Key switch
- Emergency stop switch
- ATS (automatic transfer switch) receptacle

- 2x12V/72AH sealed for life maintenance free battery
- Lockable battery isolator switch
- 50°C radiator
- Oil pump on the engine
- Steel base frame with forklifts
- Vibration isolators between the engine/alternator and base frame
- Dry type air filter
- Base fuel tank for 19 hours running
- Drain points for fuel tank
- Operation Manual / Specifications

3 Equipment Specification

General technical data

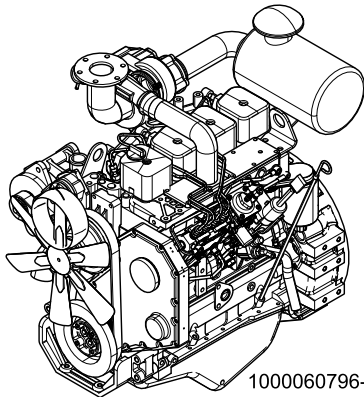


1000019487-AP1-B8

Model..... GMS42C
 Structure type D
 Tank capacity 250L
 Dry weight..... 806kg
 Noise level @7m N/A
 Dimensions L×W×H..... 2002x798x1365mm
 Standby Power 45kVA/36kW
 Prime Power 43kVA/34kW

Voltage	380V	400V	415V	440V	
Ampere	65.3A	62A	59.8A	56.4A	
Genset Fuel Consumption					
Frequency/Load	25%	50%	75%	100%	110%
50Hz (L/h)	5.0	7.5	10.0	13.0	14.0

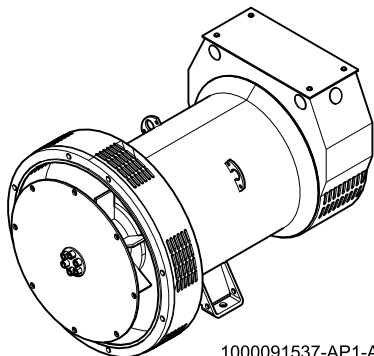
Diesel Engine



1000060796-S-AP1-B7

Engine Manufacturer/Brand.....	Cummins
Engine Model.....	4BT3.9G1
Dimensions L×W×H.....	N/A
Dry Weigh (approx.).....	321kg
Number of Cylinders.....	4
Bore.....	102mm
Stroke.....	120mm
Displacement.....	3.9L
Compression Ratio.....	N/A
Type of injection.....	Direct injection
Intake System.....	Turbo charged
Intake Resistance.....	6.2kPa
Cooling System.....	Water cooled
Fan.....	Pusher
Battery Voltage.....	12/24V
Type of Fuel.....	No.2 or ASTM D2
Type of Oil.....	API CD/SE or CCMCD4
Oil Capacity.....	10.9L
Type of Coolant.....	Glycol mixture
Coolant Capacity.....	20.8L
Back Pressure.....	≤10.1kPa
Standby Power.....	40kW
Prime Power.....	36kW
Fuel Consumption(100%load).....	214g/kW.h

Alternator



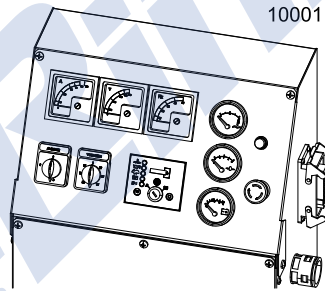
1000091537-AP1-A1

Alternator Manufacturer/Brand.....	Stamford
------------------------------------	----------

Alternator Model.....	PI144K
Exciter.....	Brushless
Cooling Fan.....	Plastic
Windings.....	100% copper
Insulation Class.....	H
Winding Pitch.....	2/3
Terminals.....	12
Drip Proof.....	IP23
Altitude.....	≤1000m
Overspeed.....	2250rpm
Air Flow.....	0.135m³/s(50HZ),0.165m³/s(60HZ)
Voltage Regulation.....	±1.0%
Total harmonic TGH / THCat no load < 1.5 % - on load < 5%	
Telephone Interference.....	THF<2%;TIF<50

PLC-702 Control System

1000115523-AP1-A5



PLC-702 key manual start module is a manual engine control module designed to control the engine via a key switch and push buttons on the front panel. The module is used to start and stop the engine and indicate fault conditions, automatically shutting down the engine and giving a true first up fault condition of an engine failure.

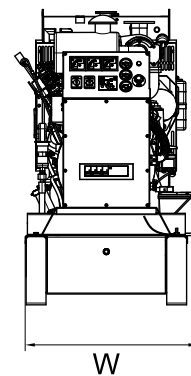
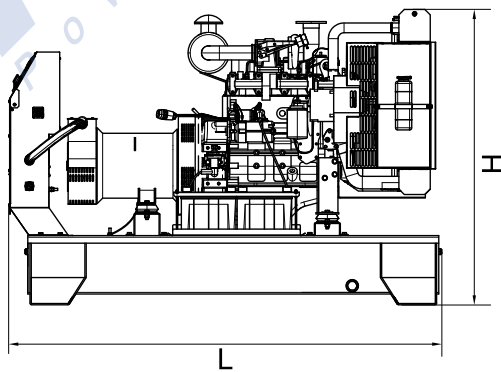
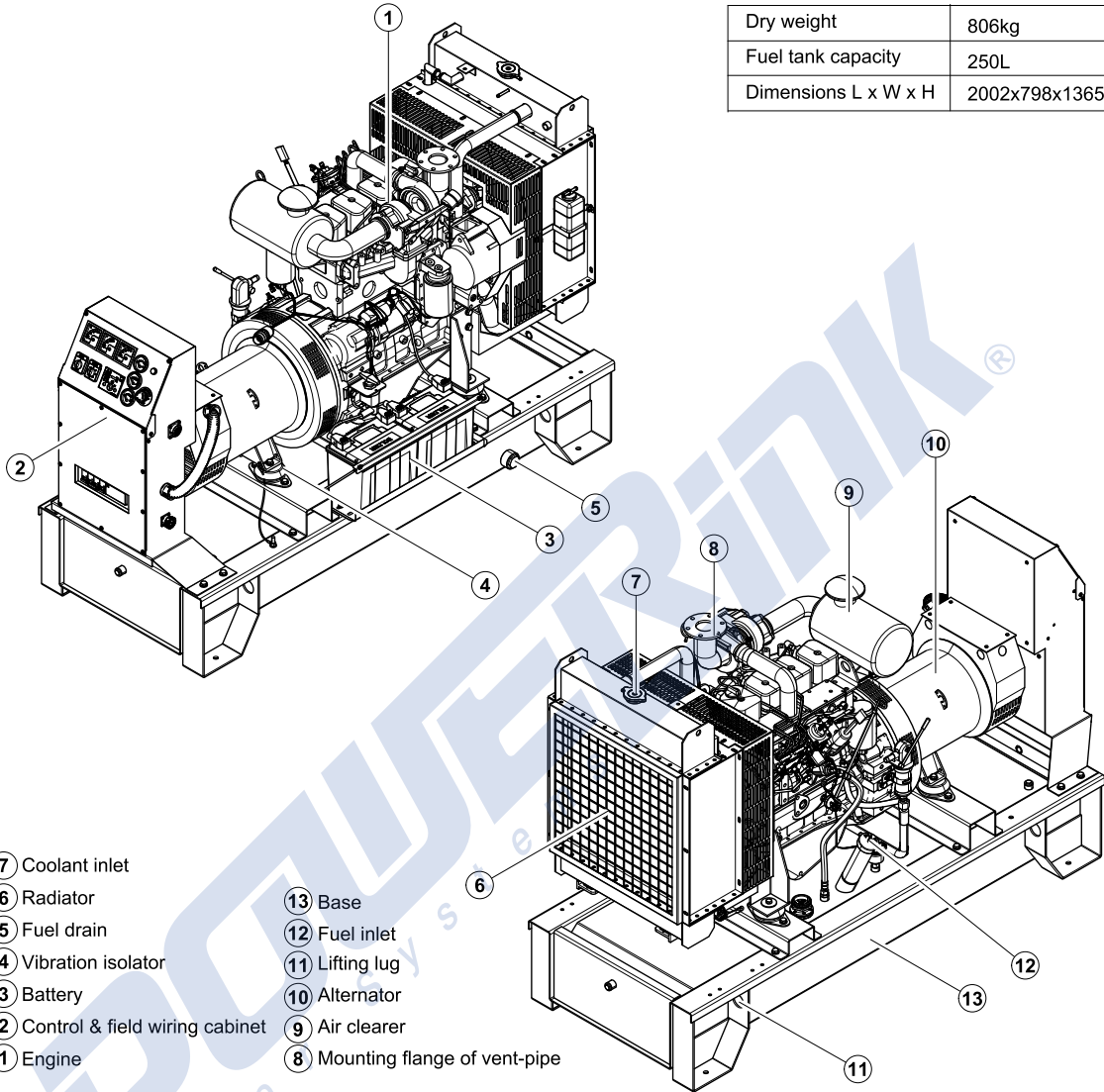
Standard Control Function

- Manual Engine Control Module
- Low Oil Pressure
- High Engine Temperature
- Auxiliary Shutdown
- Overspeed Protection
- Protection hold-off timer
- Charge Failure warning

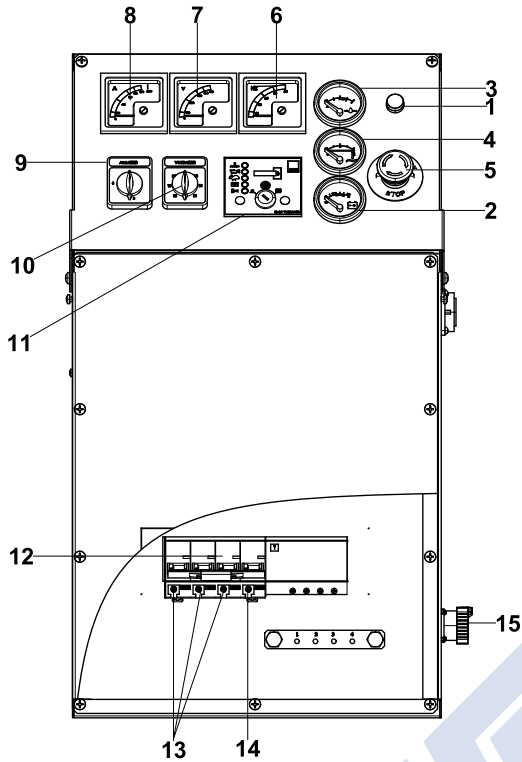
4 Overall Dimensions

1000019487-DR1-B8

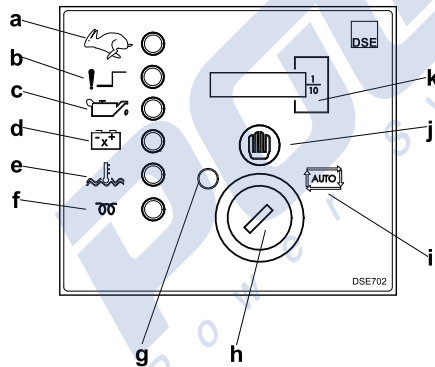
Dry weight	806kg
Fuel tank capacity	250L
Dimensions L x W x H	2002x798x1365mm



5 Control System



Control & field wiring cabinet



Control module

Ref.	Description
1	Charge indicator
2	Battery voltage meter
3	Water temperature meter
4	Oil pressure meter
5	Emergency stop button
6	Frequency meter
7	Voltage meter
8	Current meter
9	Ammeter change-over switch
10	Voltmeter change-over switch
11	PLC-702 control module
12	Main circuit breaker
13	Live wire terminals
14	Neutral wire terminal
15	Mains input/Remote control ATS communication connector

a	Over speed protection LED
b	Alarm LED
c	Low oil pressure protection LED
d	Charge failure warning LED
e	High engine temperature protection LED
f	Pre-heat LED
g	Stop model position
h	Control module key switch
i	Auto start position
j	Manual start button
k	Time counter

1000019487-B8-E

09.2012

POWERLINK[®]
Power Systems

<http://www.powerlinkworld.com>

*Specification may change without prior notice. For more info.,
contact Power Link or your local distributors please.*